

# OUTDOOR/CORROSIVE/STAINLESS STEEL

1600-8500 BTU/HR.  
469-2490 WATTS

**PROAIR™**

The Ultimate Protection



CR29

CR43

CR23

## FEATURES

- Constructed of high-grade 16-gauge type 304 stainless steel for increased protection in corrosive and outdoor applications.
- The Corrosive Environment and Outdoor Option Packages can be ordered separately or together to provide optimum defense against especially harsh conditions. The Corrosive Environment Package protects components exposed to the corrosive environment on the ambient side of the air conditioner. The Outdoor Package includes low temperature controls for operating down to -40°F.
- The ProAir™ Series combines state-of-the-art design with pleasing aesthetics. This highly efficient series offers a broad range of sizes and performance capacities.
- For more sophisticated requirements we offer Levels II and III Smart Control. This microprocessor-based option provides programmable temperature management, digital display of enclosure temperature, as well as remote alarm capabilities.
- Maintenance is made easy by front cover hinging open for quick access to all components.
- The Flip Filter design on the CR23 and CR29 uses only 50% of the filter surface so filter can be inverted to double operating time between cleanings/replacements.
- EZ Mount flanges simplify installation to a two-step, one-person job.
- Filterless operation possible in many applications.
- Unique condensate management system evaporates moisture from enclosure and eliminates drain tubes, buckets and wet floors.
- High performance fans and blowers are ideal for densely packed enclosures.
- 100% functionally tested.
- Mounting hardware, gaskets, drawings, mounting template and instruction manual furnished.
- All units use a CFC-free or environmentally safe refrigerant that is universally accepted.

   **NEMA12 NEMA4X**

Most models available with UL and CUL listing. CE available upon request. Please contact the factory. (UL File SA6453) NEMA 12 per UL 50 Type 12 approval on all models. NEMA 4X per UL 50 Type 4X optional.

## OTHER UNITS TO CONSIDER

- CR23 Stainless Steel: CR23, pg. 16; Genesis™ 17, pg. 20
- CR29 Stainless Steel: CR29, pg. 16; Genesis™ 28, pg. 24
- CR43 Stainless Steel: CR43, pg. 16

## OPTIONS (SEE PGS. 80-81)

	CR23	CR29	CR43
Smart Control Package	✓	✓	✓
Thermostat Package	✓	✓	✓
Thermostat/Malfunction Package	✓	✓	✓
Special Voltage Package	✓	✓	✓
Outdoor Package*	✓	✓	✓
Corrosive Environment Package*	✓	✓	✓
Heater Package	✓	✓	✓
NEMA 4X Package (see note on pg. 37)	✓	✓	✓

\* Must be ordered separately to achieve desired protection.

## PROAIR™ Stainless Steel CR23

1600 BTU/Hr. (469 Watts)

H x W x D: 23" (584) x 10" (254) x 8.75" (222)

Model	Voltage	Hz	Phase	BTU/Hr @		Amps @		Max Amb Temp °F/°C	Shipping Weight Lbs/Kgs
				131°F/131°F*	131°F/131°F	95°F/95°F*	95°F/95°F		
CR23-0216-G0ST	115	50/60	I	1400/1600	4.1/4.5	1500/1700	3.8/3.6	131/55	57/26
CR23-0226-G0ST	230	50/60	I	1400/1600	2.2/2.2	1500/1700	2.1/1.8	131/55	57/26

-0ST will be replaced with a two-digit number designating all desired options. Consult the factory for specific model numbers.

\* Two cooling capacities are listed to demonstrate the consistent performance throughout the typical operating range.

## PROAIR™ Stainless Steel CR29

2000-4000 BTU/Hr. (586-1172 Watts)

H x W x D: 29.50" (749) x 15.75" (400) x 8.63" (219)

Model	Voltage	Hz	Phase	BTU/Hr @		Amps @		Max Amb Temp °F/°C	Shipping Weight Lbs/Kgs
				131°F/131°F*	131°F/131°F	95°F/95°F*	95°F/95°F		
CR29-0216-G0ST	115	50/60	I	2000/2200	7.4/7.4	1700/2000	7.0/6.0	131/55	98/44
CR29-0226-G0ST	230	50/60	I	2500/2700	4.6/3.9	1900/2300	4.4/3.3	131/55	98/44
CR29-0416-G0ST	115	50/60	I	3500/4000	13.5/13.5	2400/2800	10.7/9.6	131/55	118/54
CR29-0426-G0ST	230	50/60	I	3500/4000	6.7/6.6	2400/2800	5.9/5.3	131/55	118/54

-0ST will be replaced with a two-digit number designating all desired options. Consult the factory for specific model numbers.

\*Because air conditioners provide less cooling at lower operating temperatures, two cooling capacity ratings are listed for each ProAir™ air conditioner to assist you in your selection.

## PROAIR™ Stainless Steel CR43

6000-8500 BTU/Hr. (1758-2490 Watts)

H x W x D: 43.31" (1100) x 15.75" (400) x 10.25" (260)

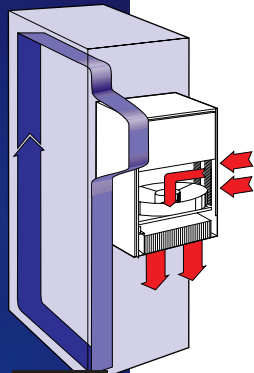
Model	Voltage	Hz	Phase	BTU/Hr @		Amps @		Max Amb Temp °F/°C	Shipping Weight Lbs/Kgs
				131°F/131°F*	131°F/131°F	95°F/95°F*	95°F/95°F		
CR43-0615-0ST	115	50/60	I	5800/6000	14.6/13.7	4800/5100	12.5/11.0	131/55	131/59
CR43-0616-0ST	115	60	I	6000	13.7	5100	11.0	131/55	131/59
CR43-0625-0ST	230	50	I	6000	6.8	5100	5.3	131/55	131/59
CR43-0626-0ST	230	60	I	6000	6.9	5100	5.5	131/55	131/59
CR43-0815-0ST	115	50/60	I	7500/8500	15.0/16.0	6700/7500	13.5/12.9	131/55	138/63
CR43-0816-0ST	115	60	I	8500	16.0	7500	12.9	131/55	138/63
CR43-0825-0ST	230	50	I	7500	8.0	7000	6.1	131/55	138/63
CR43-0826-0ST	230	60	I	8500	8.2	7500	6.3	131/55	138/63

-0ST will be replaced with a two-digit number designating all desired options. Consult the factory for specific model numbers.

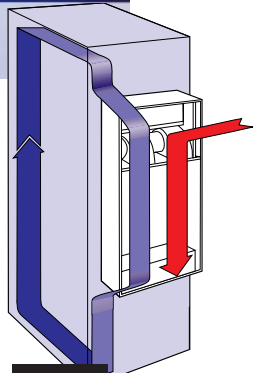
\*Because air conditioners provide less cooling at lower operating temperatures, two cooling capacity ratings are listed for each ProAir™ air conditioner to assist you in your selection.

### McLEAN MIDWEST CLOSED-LOOP COOLING

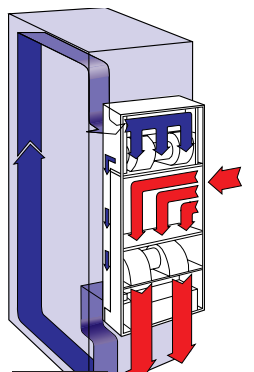
Within the air conditioner, the recirculated clean enclosure air is kept separate from the ambient airflow system. This protects the electronic controls and prevents shutdowns caused by heat, humidity, dust and other contaminants.



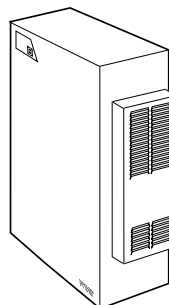
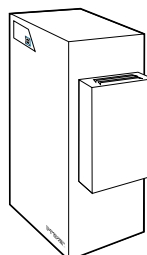
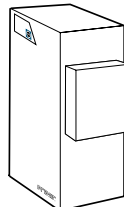
CR23



CR29



CR43

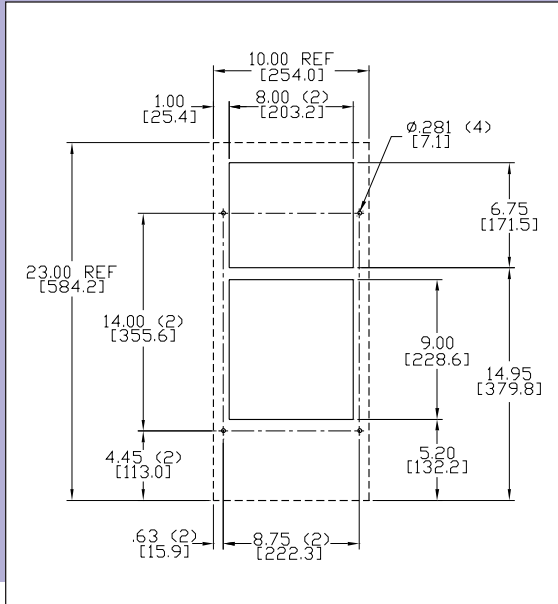


### NEMA 4X

The protective shields illustrated here are required to achieve NEMA 4X. Shield protrudes approximately 2" from the air conditioner. Contact factory for details.

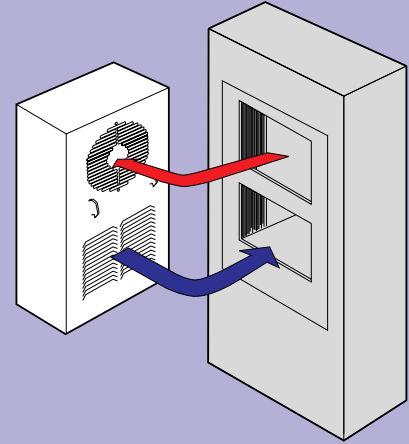
**CUT-OUT NOTES**

1. Dash lines represent air conditioner.
2. Cut-out dimensions for standard product only.
3. Full-size mounting template provided.



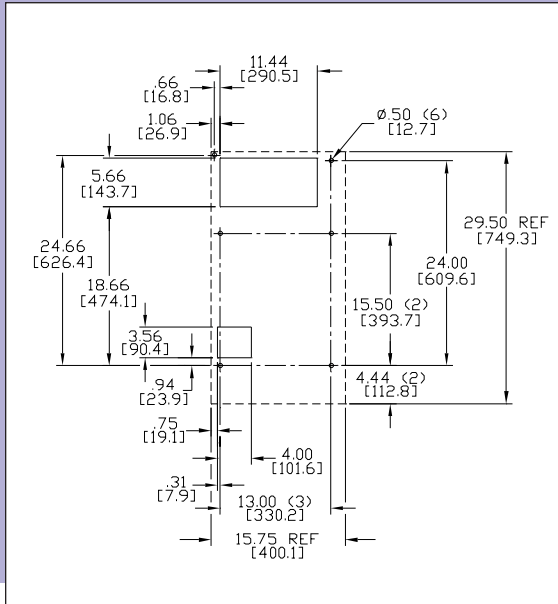
**SIDE MOUNT TO ENCLOSURE**

For NEMA type 12 enclosure, interfacing air-out and air-in openings are required in the enclosure wall.



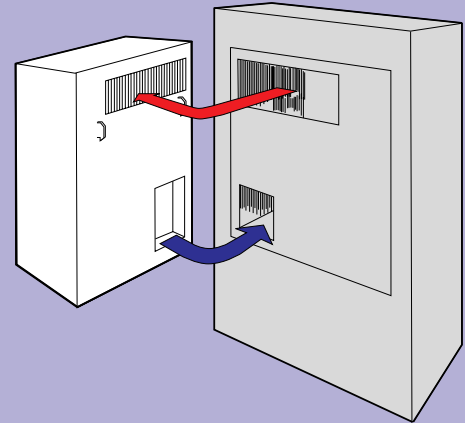
**CUT-OUT NOTES**

1. Dash lines represent air conditioner.
2. Cut-out dimensions for standard product only.
3. Full-size mounting template provided.



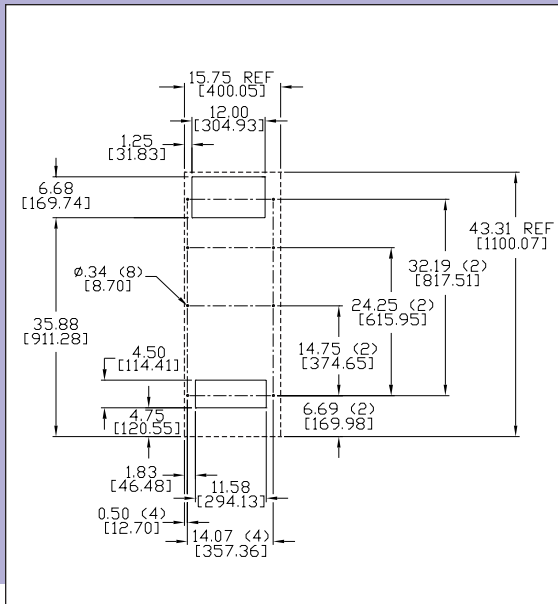
**SIDE MOUNT TO ENCLOSURE**

For NEMA type 12 enclosure, interfacing air-out and air-in openings are required in the enclosure wall.



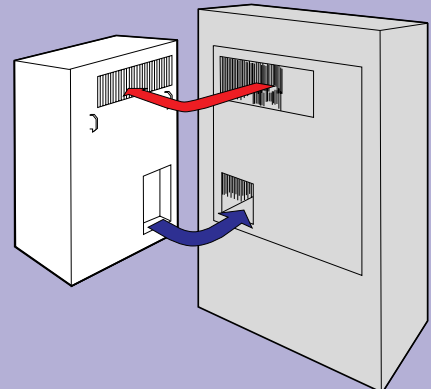
**CUT-OUT NOTES**

1. Dash lines represent air conditioner.
2. Cut-out dimensions for standard product only.
3. Full-size mounting template provided.



**SIDE MOUNT TO ENCLOSURE**

For NEMA type 12 enclosure, interfacing air-out and air-in openings are required in the enclosure wall.

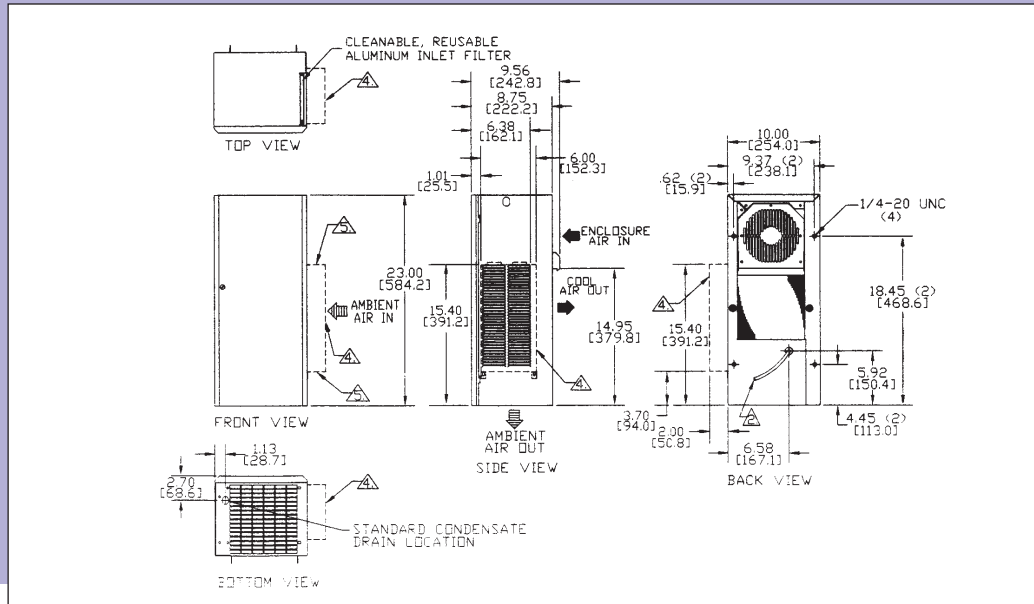


## DESIGN NOTES

1. Gasket kit for mounting to enclosure included.

2. Service cord terminated with appropriate plug cap.

4. Dashed lines indicate optional shroud used, along with other special construction features, for NEMA 4X. Please contact factory for details.

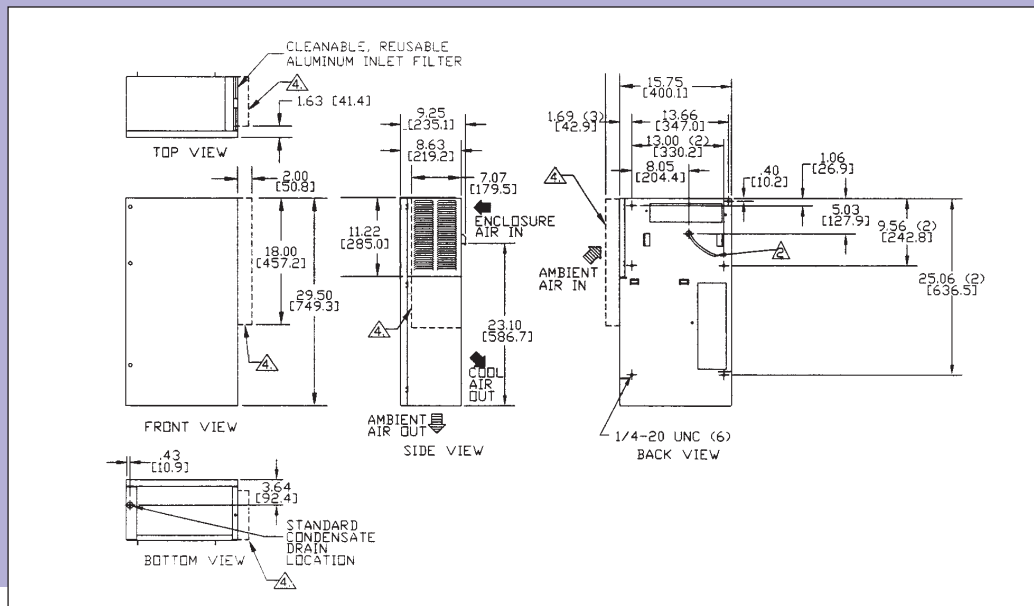


## DESIGN NOTES

1. Gasket kit for mounting to enclosure included.

2. Service cord terminated with appropriate plug cap.

4. Dashed lines indicate optional shroud used, along with other special construction features, for NEMA 4X. Please contact factory for details.



## DESIGN NOTES

1. Gasket kit for mounting to enclosure included.

2. Service cord terminated with appropriate plug cap.

4. Dashed lines indicate optional shroud used, along with other special construction features, for NEMA 4X. Please contact factory for details.

