

RACK-MOUNT Air Conditioners

2000-10000 BTU/HR.
586-2930 WATTS



FEATURES

- RCR11 is part of the ProAir™ Series which combines state-of-the-art design with pleasing aesthetics. This rack mount model is an excellent, high-efficiency model with a patented airflow system that allows it to be mounted anywhere within the enclosure. RCR11 stock models have thermostat control and EMI/RFI noise suppressor.
- Rack mount models are ideal when it is important to keep an application self-contained within the enclosure.
- Unique condensate management system evaporates moisture from enclosure to ambient air eliminating drain tubes, buckets and wet floors.
- High CFM blowers are used for maximum airflow throughout enclosure.
- 100% functionally tested.
- Mounting gaskets, drawings and instruction manual furnished.
- All units use a CFC-free or environmentally safe refrigerant that is universally accepted.

UL NEMA12

Some LB16 Series and LB14 Series models available with UL listing at additional cost. (UL File SA6453) Please contact the factory. NEMA 12 per UL 50 Type 12 approval on all models.

OPTIONS (SEE PGS. 80-81)

	RCR11	LB14	LB16
Thermostat Package	✓	✓	✓
Thermostat/Malfunction Package	✓	✓	✓
Special Voltage Package	✓	✓	✓
Corrosive Environment Package	✓	✓	✓
Stainless Steel Package	✓	✓	✓
Heater Package	✓	✓	N/A

McLEAN MIDWEST CLOSED-LOOP COOLING

Within the air conditioner, the recirculated clean enclosure air is kept separate from the ambient airflow system. This protects the electronic controls and prevents shutdowns caused by heat, humidity, dust and other contaminants.

ProAir™ RCRII Series

2000-4000 BTU/Hr. (586-1172 Watts)

H x W x D: 10.47" (266) x 19" (483) x 21.47" (545)

Model	Voltage	Hz	Phase	BTU/Hr @ 131°F/131°F*	Amps @ 131°F/131°F	BTU/Hr @ 95°F/95°F*	Amps @ 95°F/95°F	Max Amb Temp °F/°C	Shipping Weight Lbs/Kgs
RCRII-0216-G002 STOCK	115	50/60	I	1800/2000	9.0/9.0	1800/2000	8.0/7.4	131/55	95/43
RCRII-0216-G0XX	115	50/60	I	1800/2000	9.0/9.0	1800/2000	8.0/7.4	131/55	95/43
RCRII-0226-G0XX	230	50/60	I	1800/2000	5.1/4.7	1800/2000	4.7/3.9	131/55	95/43
RCRII-0416-G002 STOCK	115	50/60	I	3800/4000	12.9/12.9	3500/3500	11.1/9.9	131/55	107/49
RCRII-0416-G0XX	115	50/60	I	3800/4000	12.9/12.9	3500/3500	11.1/9.9	131/55	105/48
RCRII-0426-G0XX	230	50/60	I	3800/4000	7.1/7.1	3500/3500	5.6/5.0	131/55	105/48

-XX will be replaced with a two-digit number designating all desired options. Consult the factory for specific model numbers.

*Because air conditioners provide less cooling at lower operating temperatures, two cooling capacity ratings are listed for each ProAir™ air conditioner to assist you in your selection.

LB14 Series

7000 BTU/Hr. (2051 Watts)

H x W x D: 14.75" (375) x 19" (483) x 23.63" (600)

Model	Voltage	Hz	Full Load Amps	Phase	BTU/Hr @ Max Amb Temp	Max Amb Temp °F/°C	Shipping Weight Lbs/Kgs
LB14-0715-0XX	115	50/60	15.0	I	5800/7000	125/52	140/64
LB14-0716-0XX	115	60	15.0	I	7000	125/52	135/61
LB14-0725-0XX	230	50	8.0	I	7000	125/52	135/61
LB14-0726-0XX	230	60	7.5	I	7000	125/52	135/61

-XX will be replaced with a two-digit number designating all desired options. Consult the factory for specific model numbers.

Most models available with Hz selector, if desired. Contact factory.

The 50/60 Hz units, because of the addition of an autotransformer, cost more than straight 60 Hz models. Units wired for 50 Hz operation when shipped. A single internal wiring change is required for 60 Hz operation.

LB16 Series

10000 BTU/Hr. (2930 Watts)

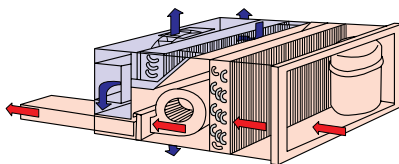
H x W x D: 15.72" (399) x 19" (483) x 25.19" (640)

Model	Voltage	Hz	Full Load Amps	Phase	BTU/Hr @ Max Amb Temp	Max Amb Temp °F/°C	Shipping Weight Lbs/Kgs
LB16-1016-0XX	115	60	20.0	I	10000	125/52	140/64
LB16-1025-0XX	230	50	10.0	I	10000	125/52	140/64
LB16-1026-0XX	230	60	10.0	I	10000	125/52	140/64

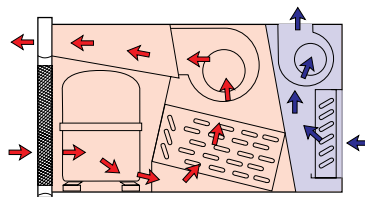
-XX will be replaced with a two-digit number designating all desired options. Consult the factory for specific model numbers.

Most models available with Hz selector, if desired. Contact factory.

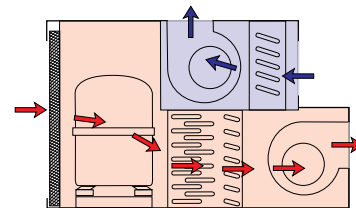
The 50/60 Hz units, because of the addition of an autotransformer, cost more than straight 60 Hz models. Units wired for 50 Hz operation when shipped. A single internal wiring change is required for 60 Hz operation.



RCRII



LB14

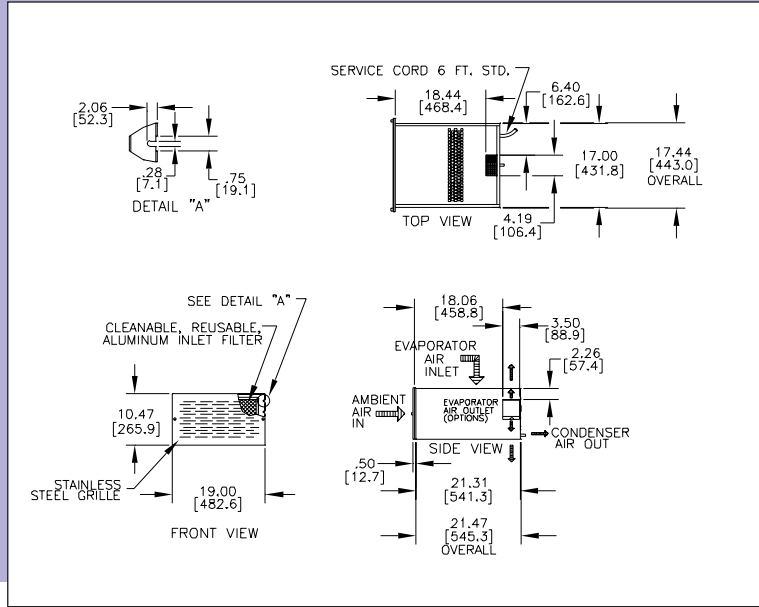


LB16

- Ambient air flow
- Clean air flow

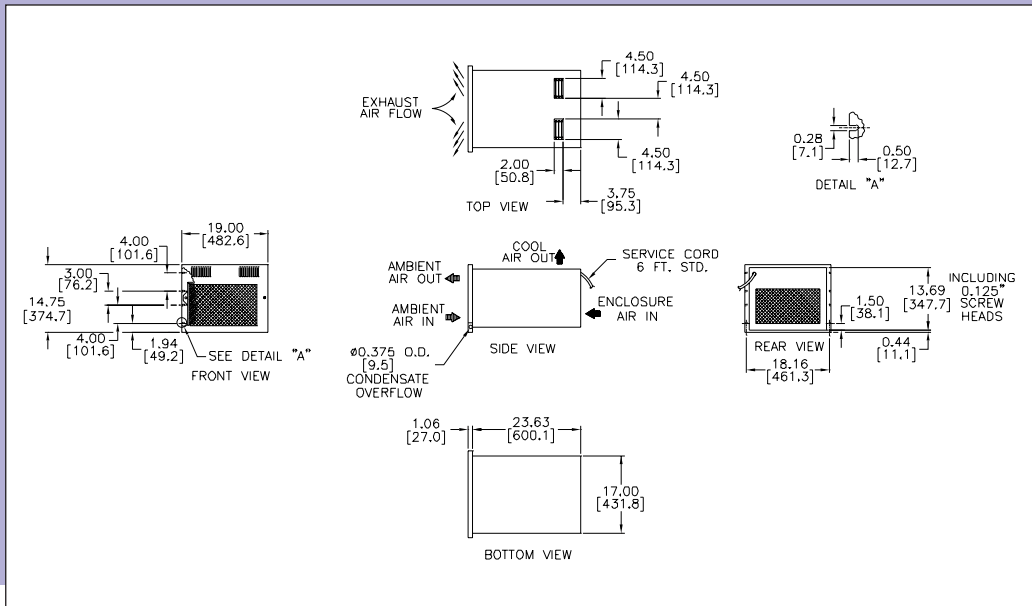
DESIGN NOTES

1. Gasket kit for mounting to enclosure included.
2. Service cord terminated with appropriate plug cap.
3. Condensate from enclosure drains to bottom pan of unit where it is evaporated into condenser air discharge.
4. Evaporator side discharge chutes hinge outward and are reversible to allow direction of air up or down. Units are shipped with chutes pointed up. To direct air downward, remove mounting screw and exchange left and right chutes. Reinstall mounting screw in upper hole.



DESIGN NOTES

1. Gasket kit for mounting to enclosure included.
2. Service cord terminated with appropriate plug cap.
3. Required opening in enclosure: 13.75" x 17.38"; minimum enclosure depth: 25".



DESIGN NOTES

1. Gasket kit for mounting to enclosure included.
2. Service cord terminated with appropriate plug cap.

